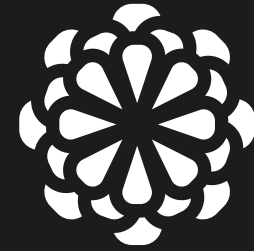


www.ofrendapuertovallarta.com



OFRENDA

**Vibrant** Traditions,  
Natural Textures,  
And Sublime  
**Design.**

Represented by





# Welcome to the Romantic Zone's New Trending Residence.





# Location

*Three blocks from Playa Olas Altas*



- 1 Malecon
- 2 Rio Cuale Market

Located in the heart of Vallarta's Romantic Zone, Ofrenda combines the very best Vallarta living has to offer. The desirable location is moments from the Los Muertos beach, Basilio Badillo and El Centro's numerous galleries, restaurants and nightlife, and the River Cuale cultural area.

# ALEGRIA

1 BED - 2 BATH

92.65 M<sup>2</sup>

997 SQFT



Lower Floor



Upper Floor



# ANHELO

1 BED - 1 BATH  
LOFT

90.15 M<sup>2</sup>

970.35 SQFT



# GRACIA

2 BED - 2 BATH

**98.05** M<sup>2</sup>  
**1055.4** SQFT



# GRACIA 2

2 BED - 2 BATH

**76.88** M<sup>2</sup>  
**827.5** SQFT



# ILUSIÓN

1 BED - 2 BATH

61.75 M<sup>2</sup>

664.6 SQFT



# LUZ 1

STUDIO

61.75 M<sup>2</sup>

664.6 SQFT



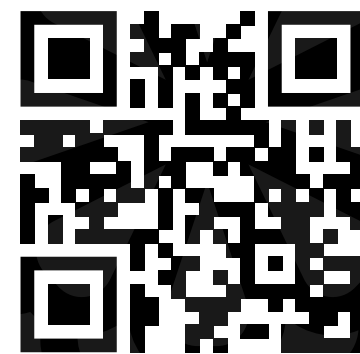
# LUZ 2

STUDIO

48.06 M<sup>2</sup>  
680.27 SQFT

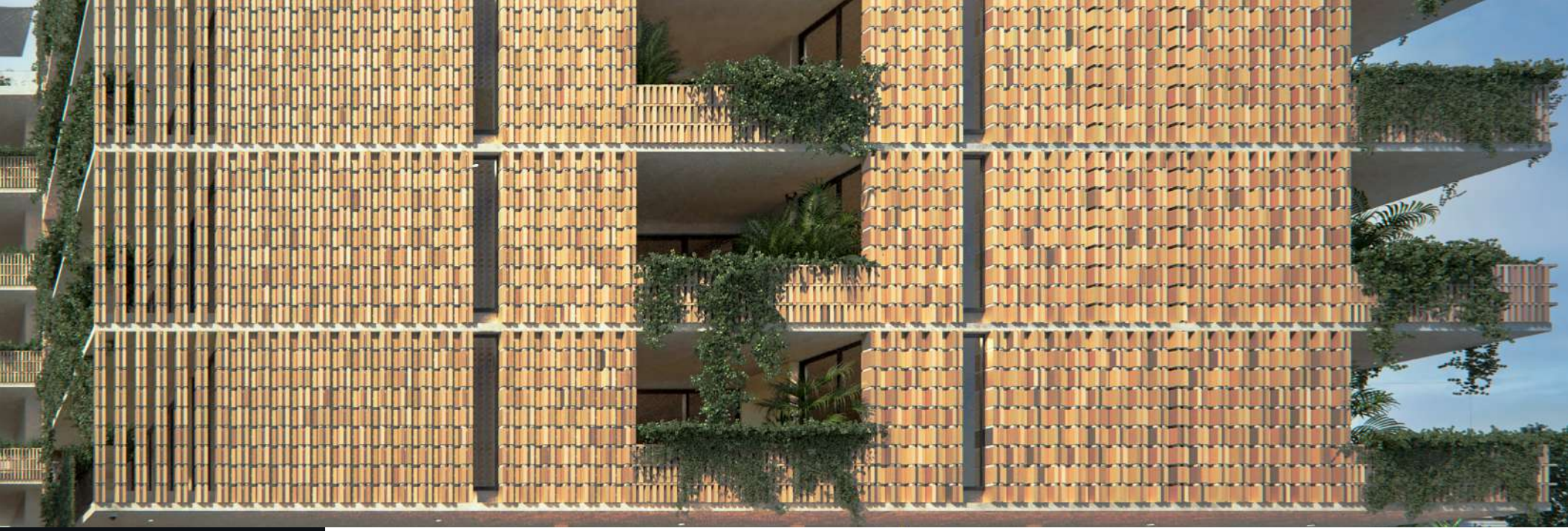


**AVAILABLE  
UNITS!**



**SCAN ME!**





Ofrenda, meaning “offering” in Spanish, pays tribute to Mexico's rich architectural heritage by employing local materials and traditional design to create a luxurious living experience. Architect Mauricio Rocha’s design aesthetic results in a building that is at once singular and iconic, one that’s been crafted with passion.

Its ambitious façade, grand open spaces and commercial area bring added life and sophistication to an already vibrant community.



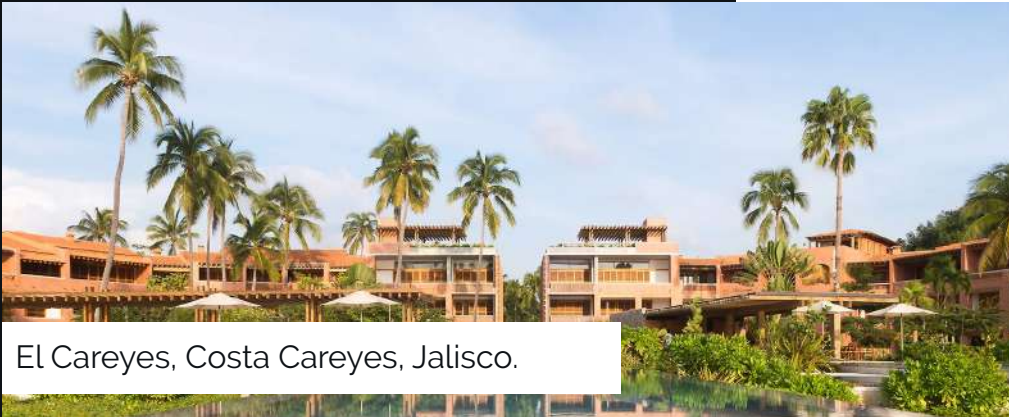
# Arq. Mauricio Rocha



Throughout his career as an architect he has designed and developed multiple projects, both public and private.

Among his most important architectural works are different projects carried out in Mexico City, such as:

- The Center for Compensatory Care for the Blind.
- Visually Impaired of the Federal District in the Iztapalapa Delegation.
- The Shelter for Girls on Av. Observatorio Street, in the Miguel Hidalgo Delegation.
- San Pablo Oztotepec Market, in the Milpa Alta Delegation.



El Careyes, Costa Careyes, Jalisco.

El Careyes Resort, a long-established hotel located in the exclusive residential and tourist community of Costa Careyes (approximately three hours south of Puerto Vallarta) was designed by Mauricio Rocha.



Four Seasons Tamarindo, Jalisco.

Another remarkable work in the area is the Four Seasons Tamarindo Resort, located in the south shore of Jalisco.

A photograph of a modern building facade. The building features a prominent vertical garden facade with multiple levels of lush green plants. To the left, a section of the building is clad in light-colored, textured bricks. The sky is a clear, bright blue. A black rectangular box with white text is overlaid on the left side of the image.

# Design with Artisanal Flare.

Be seduced by the romance of Mexico. Ofrenda's central location, modern Mexican design, and Grupo Gova's solid reputation make it your perfect real estate investment opportunity.





- Raw Finishes, Natural Materials, Ventilation, and Light.
- Large Terraces and Corresponding Basement Storage Units.
- Access Controlled Lobby & Reception.
- Underground parking with car-elevator.
- Fully Equipped Gym.

# Experience a New Take On Coastal Living.

The architectural design draws its inspiration from Mexico's deep heritage, gorgeous local materials, and a construction style that surprises at every turn.



- Bay, Mountains, River, City and Cathedral Views.
- Infinity Edge, Semi-Olympic Pool.
- Four Hot Springs Styled Jacuzzis.
- Wet Sundeck with Northwestern View.
- Sunning area with Loungers, Hammocks, and Sitting Area.
- Lounge & Sports Bar and Fire Pit.
- Bathrooms, Showers, and Changing Table.
- WiFi in the Relax Area on the Terrace







# Raw Material, Earth Tones and Natural Light.





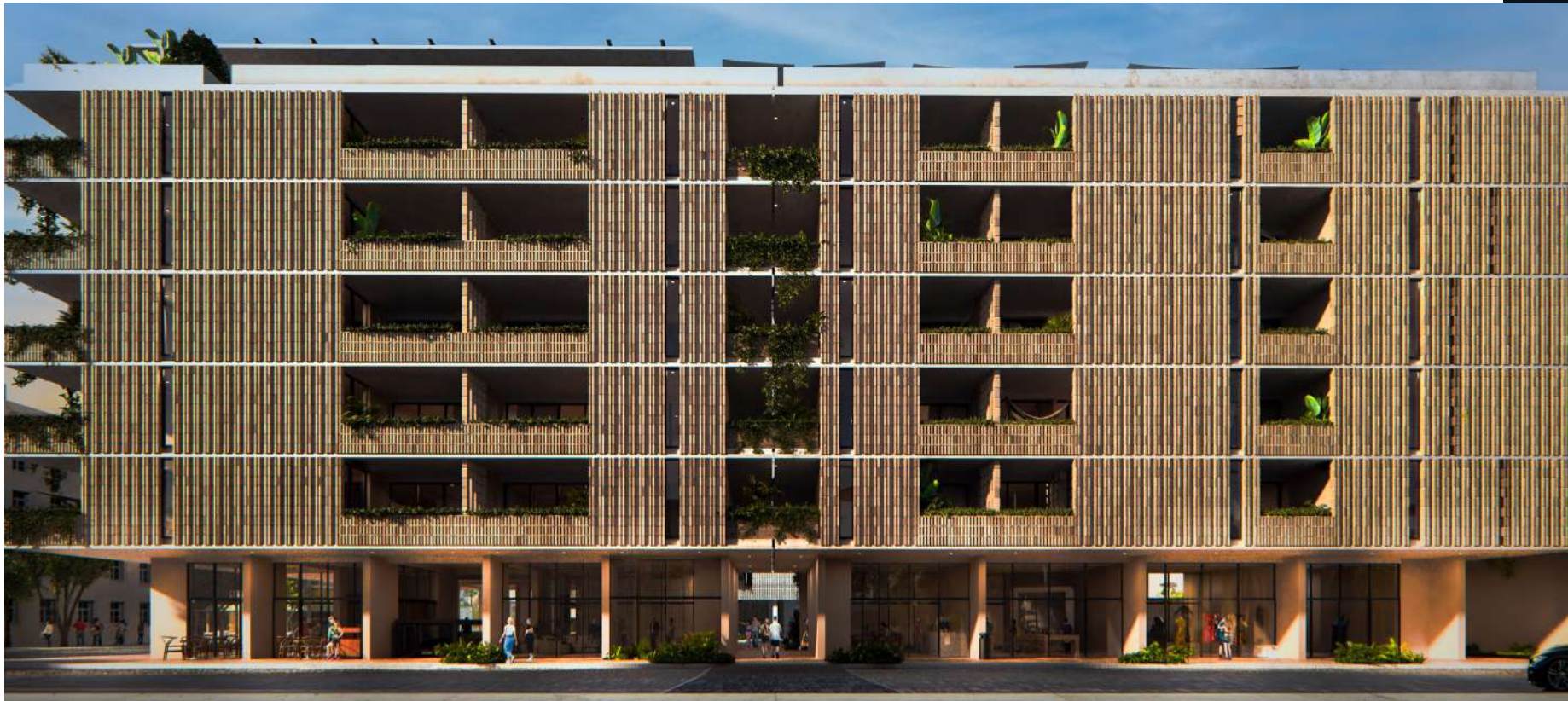
## Bathroom

- Forged Concrete, Terrazzo Roof.\*
- High-Quality Bathroom Furniture.
- Contemporary White and Water-Saving WC.
- Shower with Tempered Glass.\*

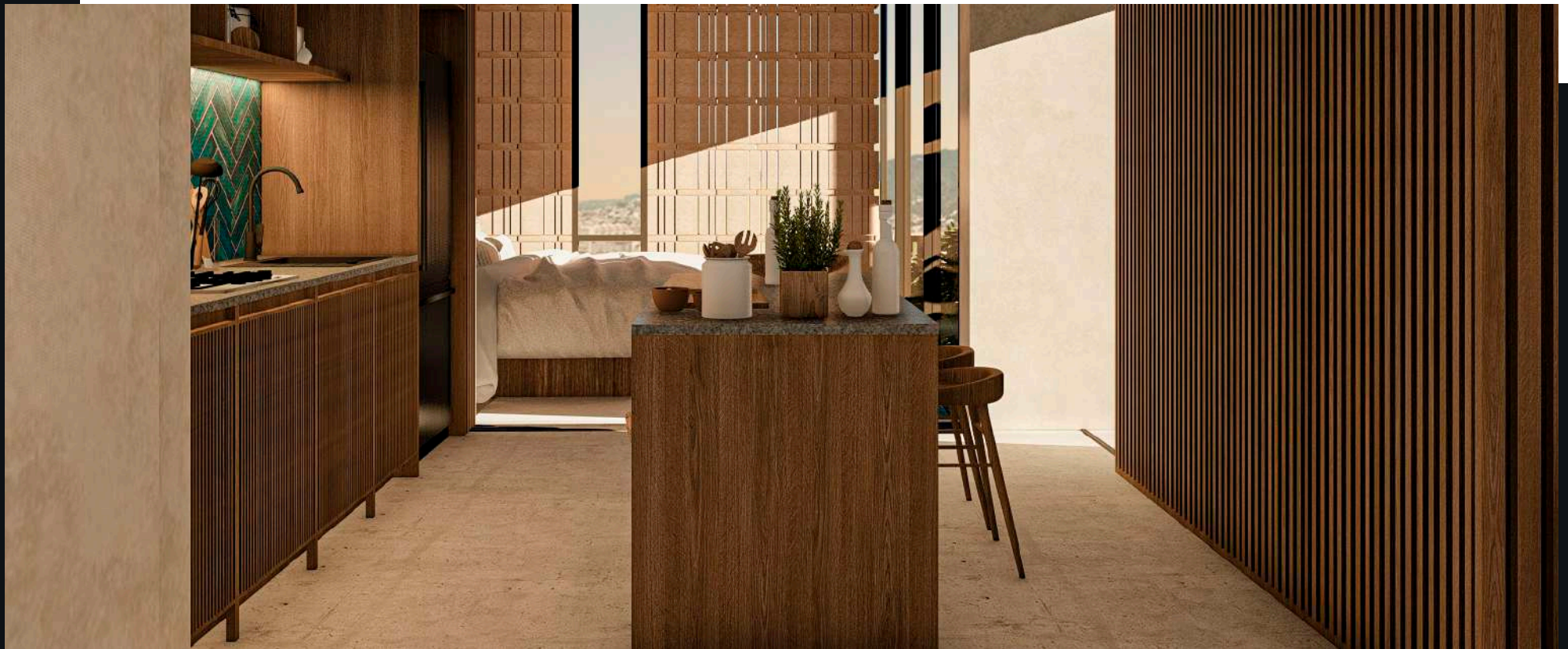
## Designer Kitchen

- Equiped with quartz counter\*, Parota-Type Wood Cabinets.
- Stainless Steel Sink.\*
- Accented Back Splash Tile
- Stainless Steel 30", 4 Burner Cooktop and Hood Whirpool/Teka.\*

\*Or similar.



**Embrace vibrant traditions,  
Sublime Design and Natural  
Materials.**







## Unit Features



- Average interior height of 3.0 meters.
- Interior floors finished in polished concrete.\*
- Exterior floors (terraces), fine washed brushed concrete.\*
- Reinforced concrete ceiling.\*
- Solid clay partition walls.\*
- Regional Chukum walls and ceramics in bathrooms and kitchen.\*
- Wired units for high-speed internet, intercom, and telephone.
- Perimeter lattice based on the bioclimatic study.

\*Or similar.




# Available Units


Studio

**12** Units

**Starting Price**  
\$4,489,320 MXN

1 Bedroom 

2 Bathroom 

**13** Units

**Starting Price**  
\$6,567,827 MXN

2 Bedroom 

2 Bathroom 

**9** Units

**Starting Price**  
\$7,374,762 MXN

*\* Prices with maximum discount applied*





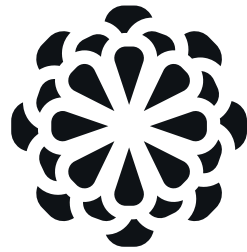
# An intimate, Cosmopolitan Beachside Enclave.

Ofrenda is in the thriving Romantic Zone, boasting a dazzling restaurant, nightlife, and art scene.

The area's historic colonial architecture lives comfortably with new low-rise developments.

It is buffeted by mountains, river and the ocean adding to one of the most culturally diverse neighborhoods in the city.

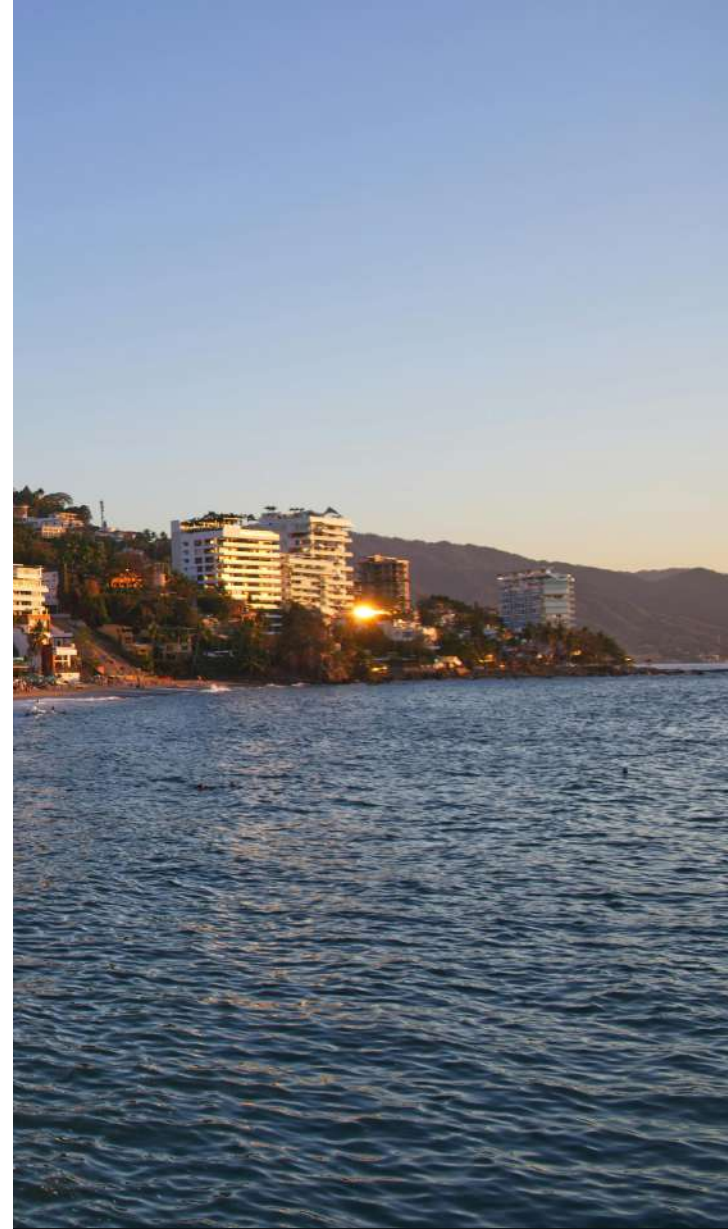




# OFRENDA

Immerse yourself in luxury and culture in  
Puerto Vallarta's iconic new community.

**Don't miss this incredible  
investment opportunity.**



Represented by

